

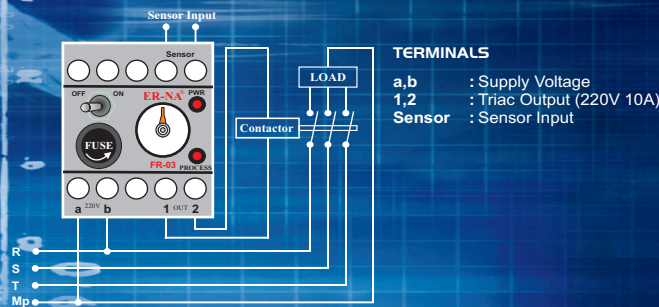
PHOTOCELL RELAYS



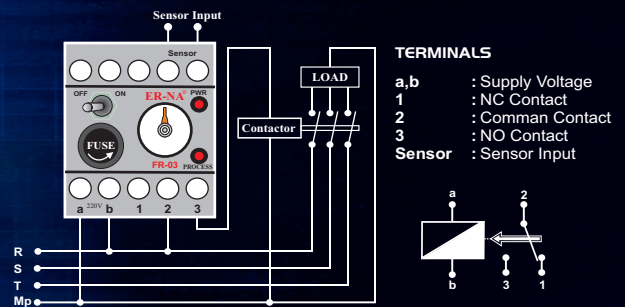
TECHNICAL DATA

Supply Voltage (Un)	: 220V AC
Operation Voltage	: (0,9-1,1) x Un
Operation Frequency	: 50/60 Hz
Output	: 1 Relay, 5A, 1250 VA (NC+NO)
Adjustable Lux Range	: 1 - 10 Lux
Operation Temperature	: -40...+50 °C
Protection Class	: IP 20
Dimensions (mm.)	: 45x55x90
Net Weight	: 115 gr.

CONNECTION DIAGRAM WITH TRIAC

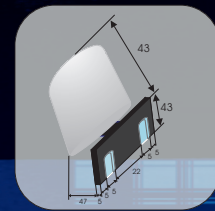


CONNECTION DIAGRAM WITH RELAY



FR-01, FR-02, FR-03

- Monitors the daylight.
- Adjustable light intensity.(1-10 Lux).
- The delay feature (30-60 Sec.) prevents the relay activation with short interval high intensity light.
- Protected with internal fuse.
- Single contact out. (NO+NC with relay output)
- Supply Voltage and Process leds are available.



PHOTOCELL SENSOR

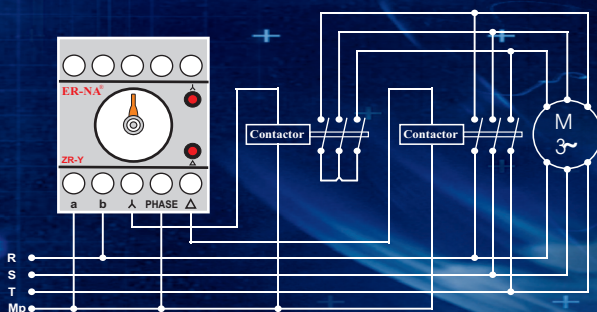
STAR-DELTA RELAYS



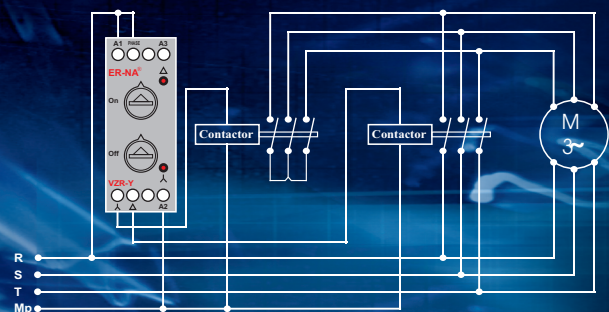
TECHNICAL DATA

Supply Voltage (Un)	: 220V AC
Operation Voltage	: (0,85-1,15) x Un
Operation Frequency	: 50/60 Hz
Output	: 2 Relay, 5A, 1250 VA (2NO)
Time Range	: On : 1-12 sec. Adjustable (ZR-Y) Off : 300 msec. Fixed (ZR-Y) On : 1-30 sec. Adjustable (VZR-Y) Off : 10-300 msec. Adjustable (VZR-Y)
Sensitivity	: ± %1
Operation Temperature	: -40...+50 °C
Protection Class	: IP 20
Dimensions (mm.)	: 45x55x90 (Classic Type) 23x82x85 (Slim Type)
Net Weight	: 96 gr. (Classic Type) 93 gr. (Slim Type)

CONNECTION DIAGRAM



CONNECTION DIAGRAM



ZR-Y, VZR-Y

- As soon as the power is applied, the star relay is switched on, at the end of the set time star relay switched of and delta relay is switched on.
- Double contact out.

- Star and Delta relay output leds are available.
- With slim type relay (VZR-Y), ON and OFF time can be adjust independently.