

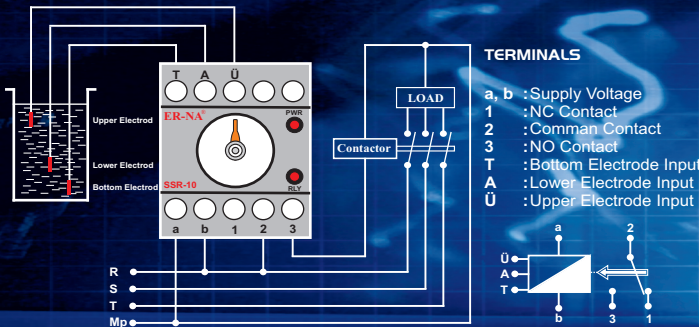
## LIQUID LEVEL CONTROL RELAYS



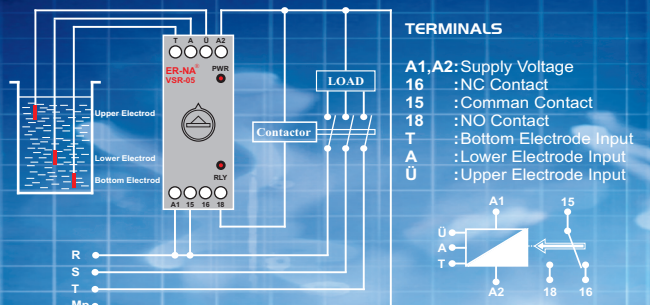
### TECNICAL DATA

Supply Voltage (Un)	: 220V AC
Operation Voltage	: (0,9-1,1) x Un
Operation Frequency	: 50/60 Hz
Output	: 1 Relay, 5A, 1250 VA (NO+NC)
Adjustable Sensitivity	: 5-100 Kohm
Operation Temperature	: -40...+50 °C
Protection Class	: IP 20
Dimensions ( mm.)	: 45x55x90 (Classic Type) 23x82x85 (Slim Type)
Net Weight	: 191 gr. (Classic Type) 123 gr. (Slim Type)

### CONNECTION DIAGRAM



### CONNECTION DIAGRAM



### SSR-10, VSR-05

- Designed to control the level of conductive liquids.
- Uses 3 electrodes. Upper(Ü), Lower(A), Bottom (T)
- The relay keeps switching on until the liquid level drops under the electrode(Ü).

- Single contact out. (NO+NC)
- Supply Voltage and relay contact led available.
- Cannot be used with flammable liquids.



### TECHNICAL DATA

Supply Voltage (Un)	: 220V AC
Operation Voltage	: (0,9-1,1) x Un
Operation Frequency	: 50/60 Hz
Output	: 2 Relay, 5A, 1250 VA (2NC+2NO)
Operation Temperature	: -40...+50 °C
Protection Class	: IP 20
Dimensions ( mm.)	: 45x55x90
Net Weight	: 195 gr.

### SSR-12, SSR-22

- Specially produced to control the liquid level of the stream-iron and performs effective operations at high temperature.
- SSR-22 is used with depot liquid level of the stream iron and has contact out for absence of water.
- Motor and Resistance relay contact outs are available.
- Supply voltage, motor and resistance contact leds are available.

