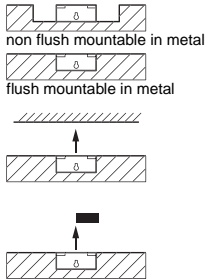


Osiprox Inductive Proximity Sensors



Osiconcept®
Offering simplicity through innovation

A single product that adapts to all metal environments

Accurate position detection via teach mode.



	Type E (26 x 26)	Type C (40 x 40)	Type D (80 x 80)	Ø 12
Nominal Sensing Distance S_n	15 mm	25 mm	60 mm	5 mm
Usable sensing dist. S (mm) shielded/non-shielded	0...10 / 0...15	0...15 / 0...25	0...40 / 0...60	0...3.4 / 0...5
Precision adjustment range (mm) shielded/non-shielded	5...10 / 5...15	8...15 / 8...25	20...40 / 20...60	1.7...3.4 / 1.7...5
Mounting in metal	shielded or non-shielded via Osiconcept teach mode			
Enclosure M (metal) P (plastic)	P	P	P	M
Temperature range °F (°C)	- 13...158 (- 25...70)	- 13...158 (- 25...70)	- 13...158 (- 25...70)	- 13...158 (- 25...70)
Degree of protection (conforming to IEC 60 529)	pre-cabled: IP68 (with connector: IP67)			

Sensors for DC applications --- (3-wire)

Connection: pre-cabled PvR (2 m)

Dimensions (mm) Ø x L or H x W x L		26 x 26 x 13	40 x 40 x 15	80 x 80 x 26	M12 x 54
3-wire	PNP	NO	XS8E1A1PAL2	XS8C1A1PAL2	XS8D1A1PAL2
	PNP	NC	XS8E1A1PBL2	XS8C1A1PBL2	XS8D1A1PBL2
	NPN	NO	XS8E1A1NAL2	XS8C1A1NAL2	XS8D1A1NAL2
	NPN	NC	XS8E1A1NBL2	XS8C1A1NBL2	XS8D1A1NBL2

Connection: M8 or M12 connector

3-wire	PNP	NO	XS8E1A1PAM8	XS8C1A1PAM8	XS8D1A1PAM12	XS612B2PAL01M12 (2)
	PNP	NC	XS8E1A1PBM8	XS8C1A1PBM8	XS8D1A1PBM12	XS612B2PBL01M12 (2)
	NPN	NO	XS8E1A1NAM8	XS8C1A1NAM8	XS8D1A1NAM12	XS612B2NAL01M12 (2)
	NPN	NC	XS8E1A1NBM8	XS8C1A1NBM8	XS8D1A1NBM12	XS612B2NBL01M12 (2)

Supply voltage limits min/max (V) including ripple	10...36	10...36	10...36	10...36
Switching capacity, max (mA)	100	200	200	200
Short-circuit protection (◆)	◆	◆	◆	◆
LED output state indication (✱) and power on LED (★)	✱/★	✱/★	✱/★	✱/★
Voltage drop, closed state (V) at I nominal	≤ 2	≤ 2	≤ 2	≤ 2
Switching frequency (Hz)	1000	1000	100	1000

Sensors for AC or DC applications ~ / --- (2-wire)

Connection: pre-cabled PvR (2 m)

Dimensions (mm) Ø x L or H x W x L		26 x 26 x 13	40 x 40 x 15	80 x 80 x 26	-
2-wire	AC/DC without short-circuit protection (1)	NO	XS8E1A1MAL2	XS8C1A1MAL2	XS8D1A1MAL2
		NC	XS8E1A1MBL2	XS8C1A1MBL2	XS8D1A1MBL2

Connection: 1/2" 20 UNF connector

2-wire	AC/DC without short-circuit protection (1)	NO	XS8E1A1MAL01U20	XS8C1A1MAL01U20	XS8D1A1MAU20	-
		NC	XS8E1A1MBL01U20	XS8C1A1MBL01U20	XS8D1A1MBU20	-
Supply voltage limits min/max (V) including ripple on DC		20...264	20...264	20...264	-	-
Switching capacity, max (mA)		200	260	260	-	-
LED output state indication (✱) and power on LED (★)		✱/★	✱/★	✱/★	-	-
Residual current, open state (mA)		≤ 1.5	≤ 1.5	≤ 1.5	-	-
Voltage drop, closed state (V) at I nominal		≤ 5.5	≤ 5.5	≤ 5.5	-	-
Switching frequency (Hz) AC / DC		50 / 1000	50 / 1000	50 / 1000	-	-

(1) It is necessary to place a 0.8 A quick-blow fuse in series with the load.

Accessories

For flat sensors, forms E, C and D				Mounting bracket with indexing pin for cylindrical sensors			
		straight	90°	Adaptor plate for block type sensors XSE / XSC / XSD	M8	XSZB108	
		Type E	XSZBE00		XSZBE90	M12	XSZB112
		Type C	XSZBC00		XSZBC90	M18	XSZB118
		Type D	XSZBD00		-	M30	XSZB130

