



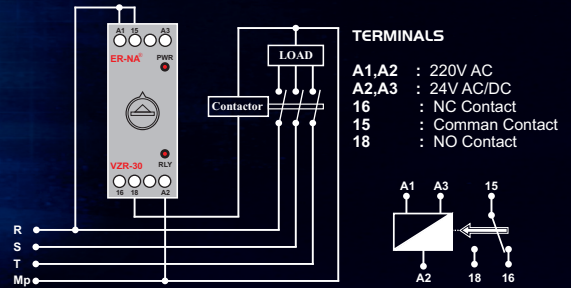
### TECHNICAL DATA

Supply Voltage (Un)	: 220V AC
Operation Voltage	: (0,9-1,1) x Un
Operation Frequency	: 50/60 Hz
Output	: 1 Relay, 5A, 1250 VA (NC+NO)
Sensitivity	: ± %5
Operation Temperature	: -40...+50 °C
Protection Class	: IP 20
Installation	: To the mounting rails
Dimensions ( mm.)	: 23x82x85
Net Weight	: 81 gr.

### VZR-xx

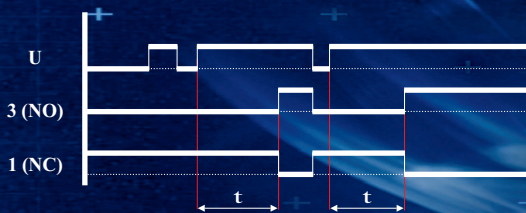
- On delay time relay type.
- The relay is switched on at the end of the set time period and the led turns on.
- Single Contact Out ( NO+NC )
- Supply Voltage and Relay Contact leds available.
- Standardized railed relays.

### CONNECTION DIAGRAM

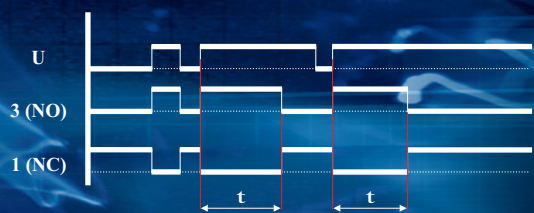


Code	Supply Voltage	Adjustable Time Range min. / max.	Time Tolerance	Output	Dimensions (mm)	Function
VZR-03	220 V AC 24V AC/DC 50/60 Hz	0,1-3 sec.	± %5	1 Relay (NO+NC) 5A / 1250VA	23x82x85	On Delay
VZR-06		0,1-6 sec.				
VZR-12		0,1-12 sec.				
VZR-30		1-30 sec.				
VZR-60		1-60 sec.				
VZR-03D		0,1-3 min.				
VZR-06D		0,1-6 min.				
VZR-12D		0,1-12 min.				
VZR-30D		1-30 min.				
VZR-60D		1-60 min.				

On Delay Timer Functional Diagram



Off Delay Timer Functional Diagram



**NOTE** : Upon request, the relay with different voltages supplies (12V-24V-48V DC, 12V-24V-48V-110V-380V AC) can be produced.